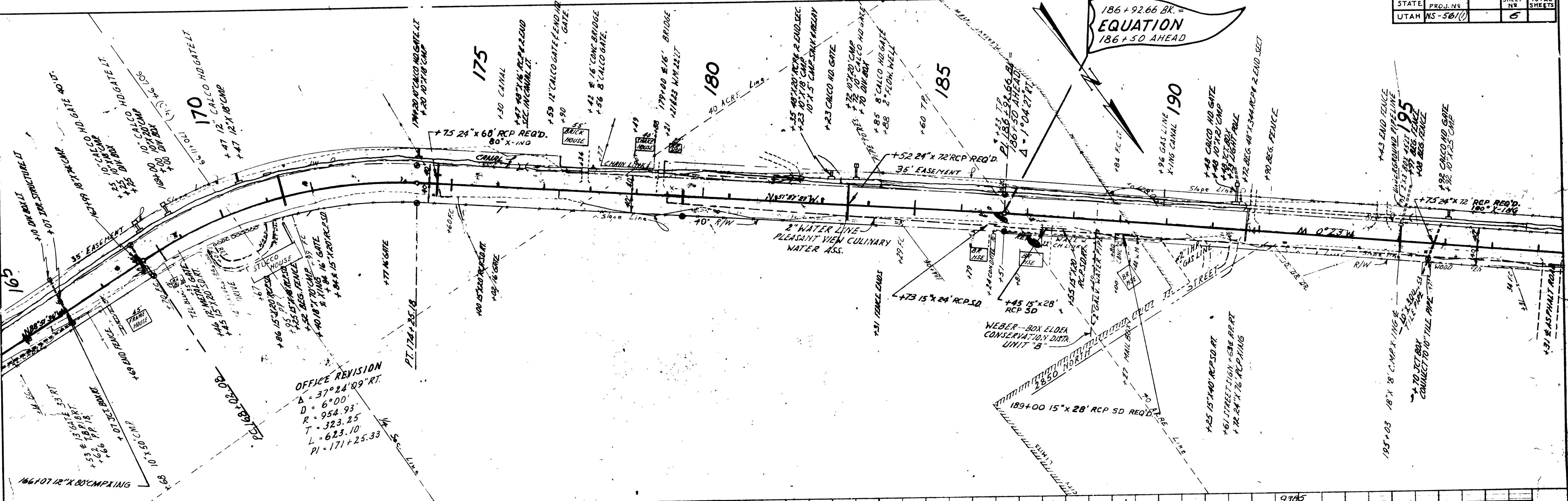
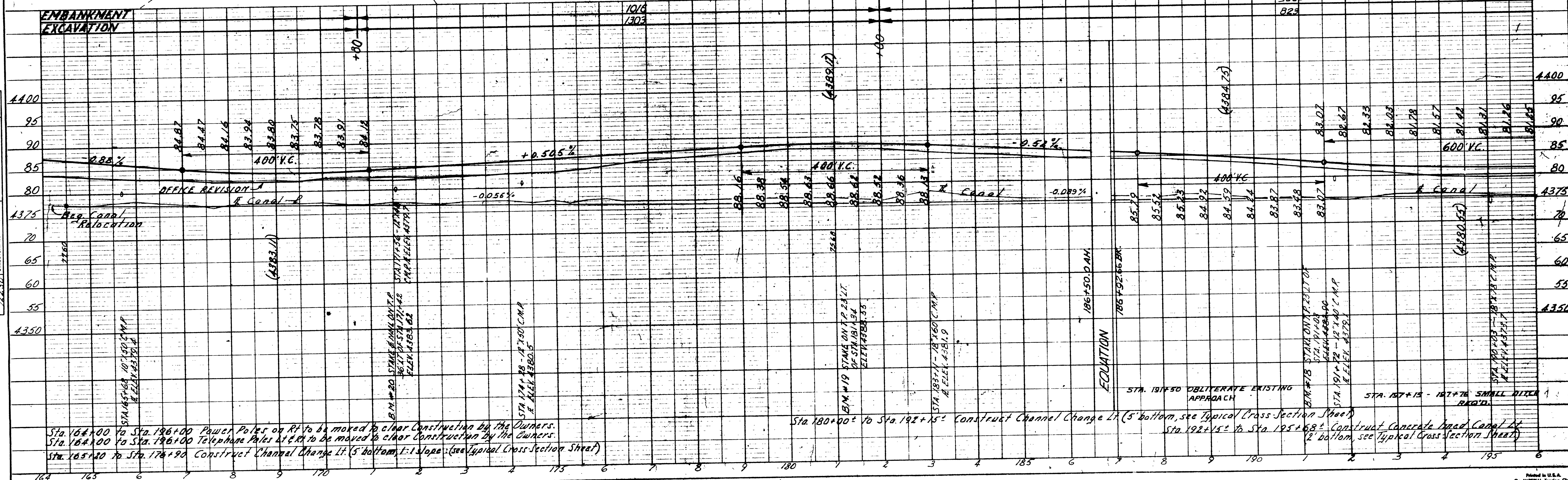


DATE: 12/22/00
 BY: J. W. WILSON
 SURVEYED: 12/22/00
 PLOTTED: 12/22/00
 ALIGNED: 12/22/00
 CHECKED: 12/22/00
 NO. 122230



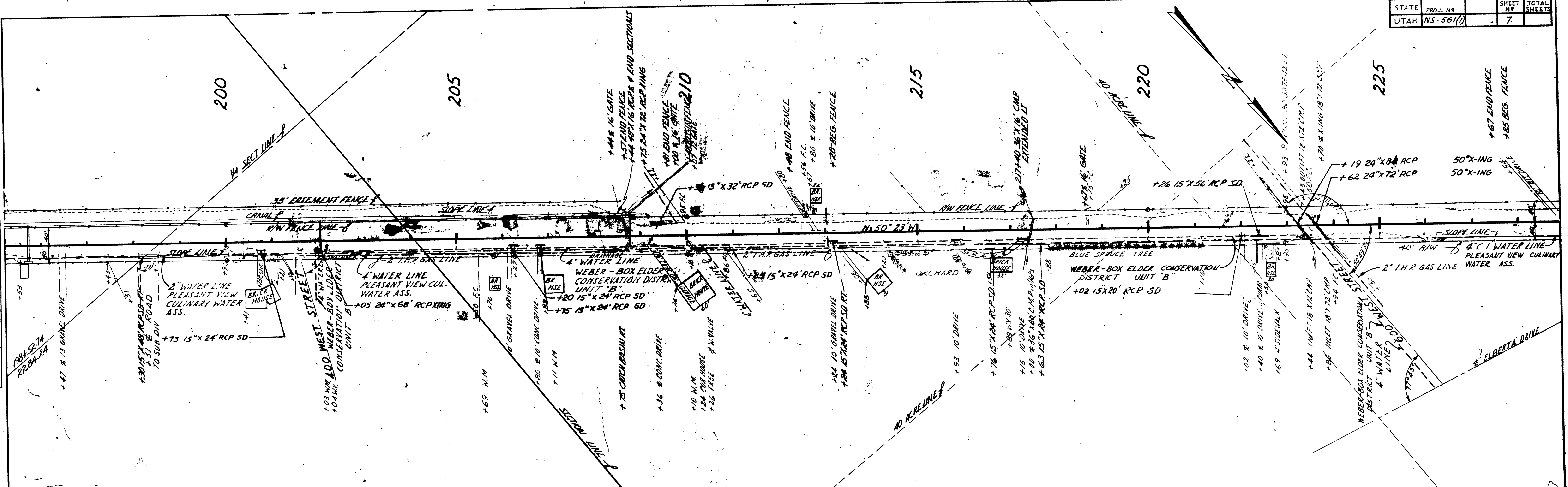
OFFICE REVISION
 $\Delta = 37^\circ 24' 09''$ RT
 $D = 6' 00''$
 $R = 954.93'$
 $T = 323.25'$
 $L = 623.10'$
 $PI = 171 + 25.33'$

DATE: 12/22/00
 BY: J. W. WILSON
 SURVEYED: 12/22/00
 PLOTTED: 12/22/00
 ALIGNED: 12/22/00
 CHECKED: 12/22/00
 NO. 122230

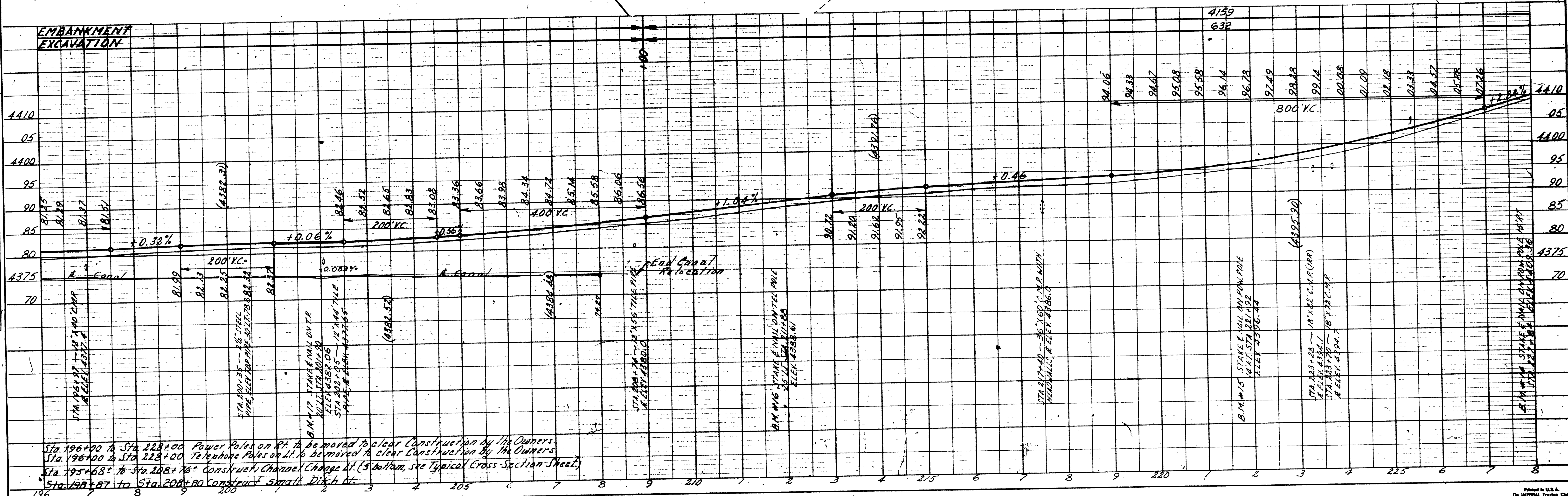


Sta. 164+00 to Sta. 196+00 Power Poles on Rt. to be moved to clear Construction by the Owners.
 Sta. 164+00 to Sta. 196+00 Telephone Poles to be moved to clear Construction by the Owners.
 Sta. 165+20 to Sta. 176+90 Construct Channel Change Lt. (5' bottom, 1:1 Slope) (see Typical Cross Section Sheet)
 Sta. 180+00 to Sta. 192+15 Construct Channel Change Lt. (5' bottom, see Typical Cross Section Sheet)
 Sta. 192+15 to Sta. 195+68 Construct Concrete-lined Canal Lt. (2' bottom, see Typical Cross Section Sheet)

DATE: 8/25/66
 SURVEYED BY: W.L. BARNARD
 CHECKED BY: W.L. BARNARD
 NO. OF WAY CHECKED: 1
 NO. OF STAKES: 1
 NO. OF CORNER MARKS: 1
 NO. OF BENCH MARKS: 1
 NO. OF ELEVATION POINTS: 1
 NO. OF SIGHTING POINTS: 1
 NO. OF POINTS: 1
 NO. OF STAKES: 1
 NO. OF CORNER MARKS: 1
 NO. OF BENCH MARKS: 1
 NO. OF ELEVATION POINTS: 1
 NO. OF SIGHTING POINTS: 1
 NO. OF POINTS: 1



DATE: 8/25/66
 SURVEYED BY: W.L. BARNARD
 CHECKED BY: W.L. BARNARD
 NO. OF WAY CHECKED: 1
 NO. OF STAKES: 1
 NO. OF CORNER MARKS: 1
 NO. OF BENCH MARKS: 1
 NO. OF ELEVATION POINTS: 1
 NO. OF SIGHTING POINTS: 1
 NO. OF POINTS: 1



Sta. 196+00 to Sta. 228+00 Power Poles on Rt. to be moved to clear Construction by the Owners
 Sta. 196+00 to Sta. 228+00 Telephone Poles on Lt. to be moved to clear Construction by the Owners
 Sta. 195+68 to Sta. 208+76 Construct Channel Change Lt. (5' bottom, see Typical Cross Section Sheet)
 Sta. 198+67 to Sta. 208+80 Construct Small Ditch Lt.

STATE	PROJ. NO.	SHEET NO.	TOTAL SHEETS
UTAH	NS-56(1)	8	

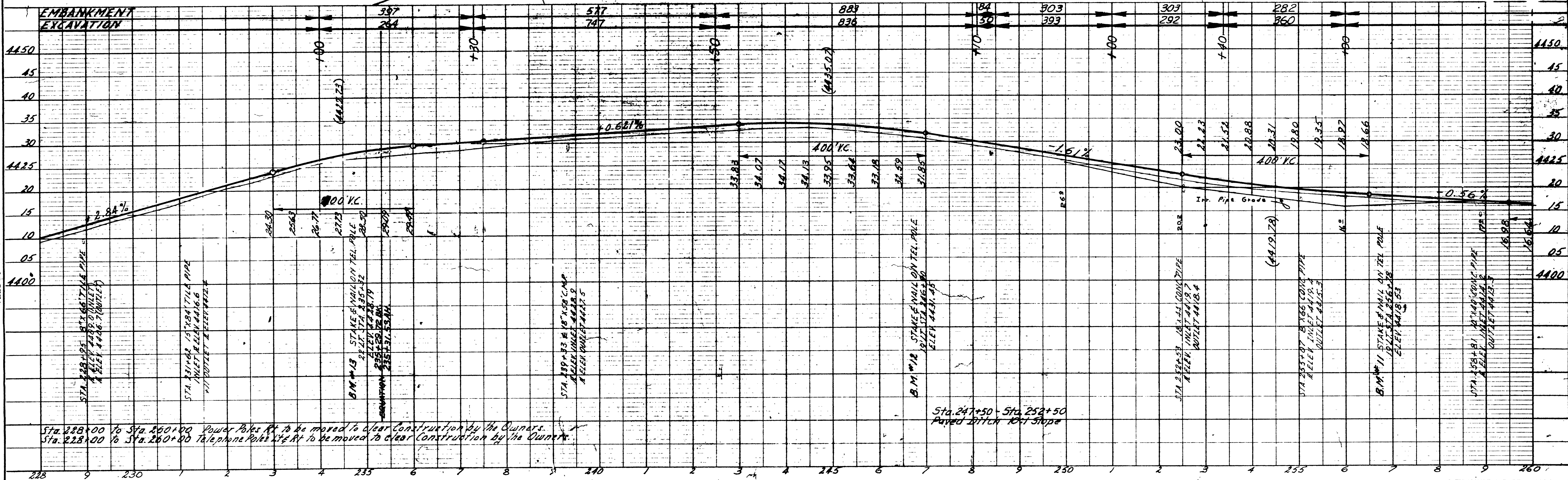
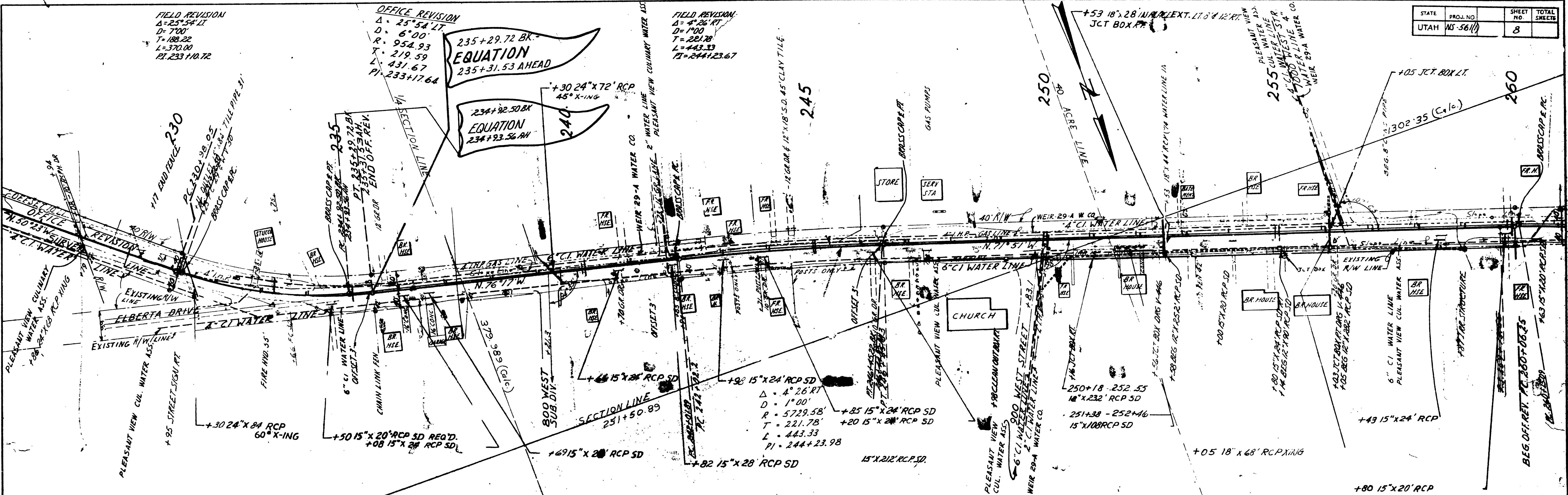
FIELD REVISION
 $\Delta = 25^{\circ}54' LT$
 $D = 7'00"$
 $T = 188.22$
 $L = 370.00$
 $PI = 233+10.72$

OFFICE REVISION
 $\Delta = 25^{\circ}54' LT$
 $D = 6'00"$
 $R = 954.93$
 $T = 219.59$
 $L = 431.67$
 $PI = 233+17.64$

FIELD REVISION
 $\Delta = 4^{\circ}26' RT$
 $D = 1'00"$
 $T = 221.78$
 $L = 443.33$
 $PI = 244+23.67$

EQUATION
 $235+29.72 BK.$
 $235+31.53 AHEAD$

EQUATION
 $234+92.50 BK.$
 $234+93.56 AHEAD$



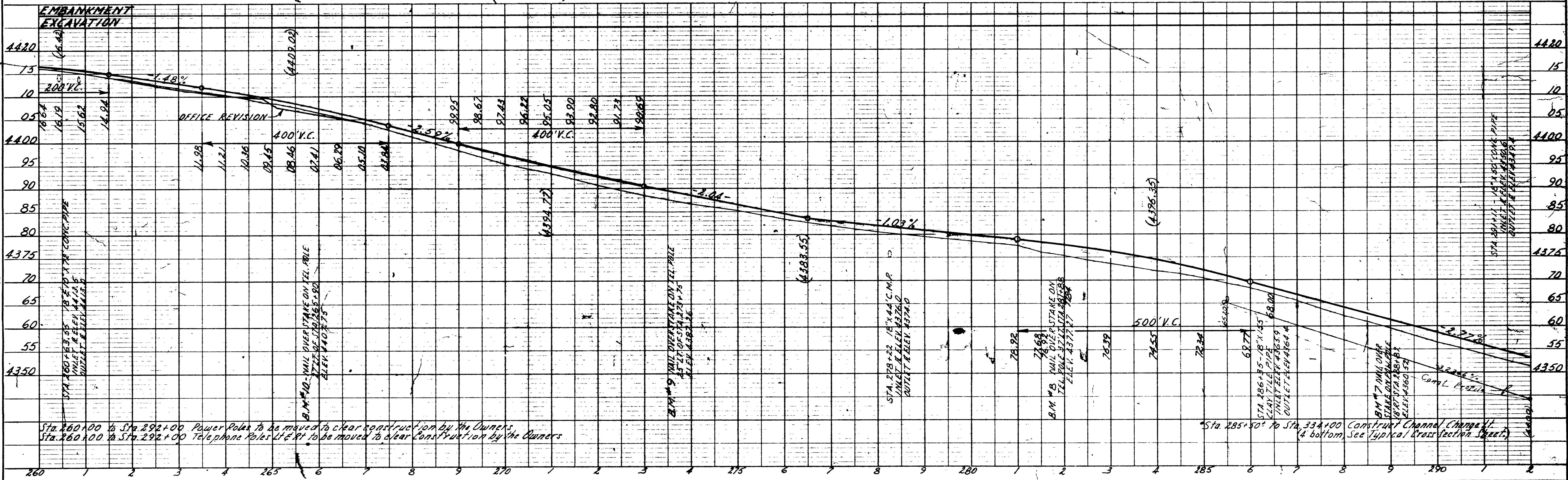
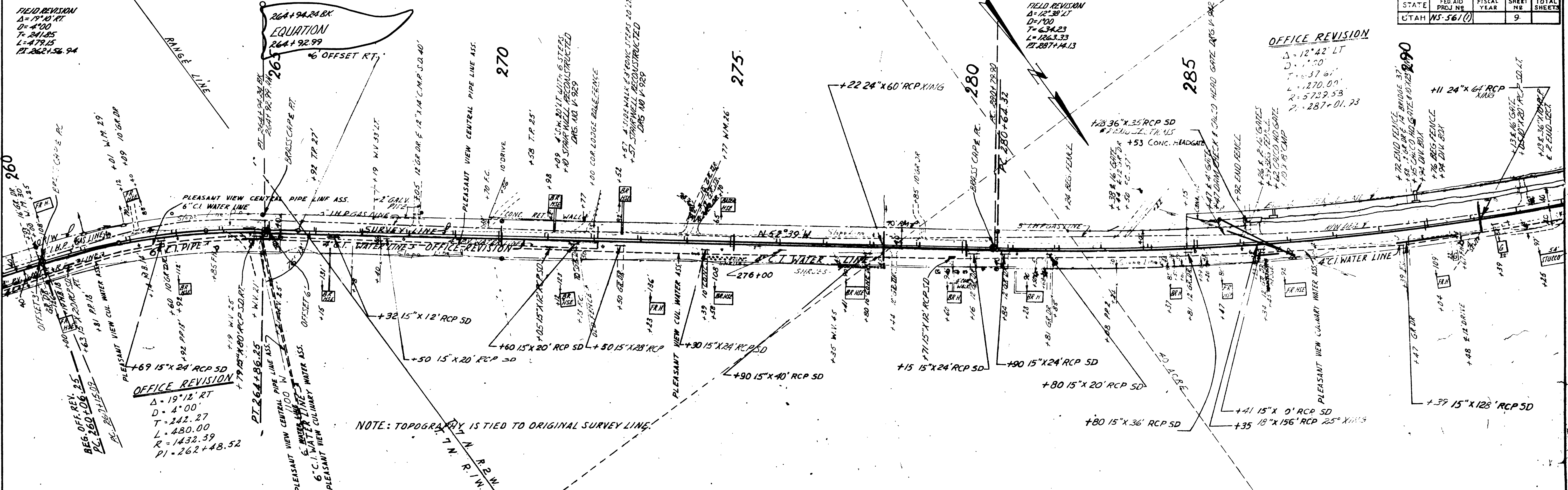
PLAN

DATE	BY	CHECKED
5/20/63	M. J. SHAW	M. J. SHAW
NO. 2222	NO. 2222	NO. 2222

PROFILE

DATE	BY	CHECKED
5/20/63	M. J. SHAW	M. J. SHAW
NO. 2222	NO. 2222	NO. 2222

STATE	FED. AID PROJ. NO.	FISCAL YEAR	SHEET NO.	TOTAL SHEETS
UTAH	NS-561(1)		9	



DATE	BY	PLAN	REVISION
11/22/50	M. J. MARDEN	PL. 260	REV. 3/63
11/22/50	M. J. MARDEN	PL. 260	
11/22/50	M. J. MARDEN	PL. 260	

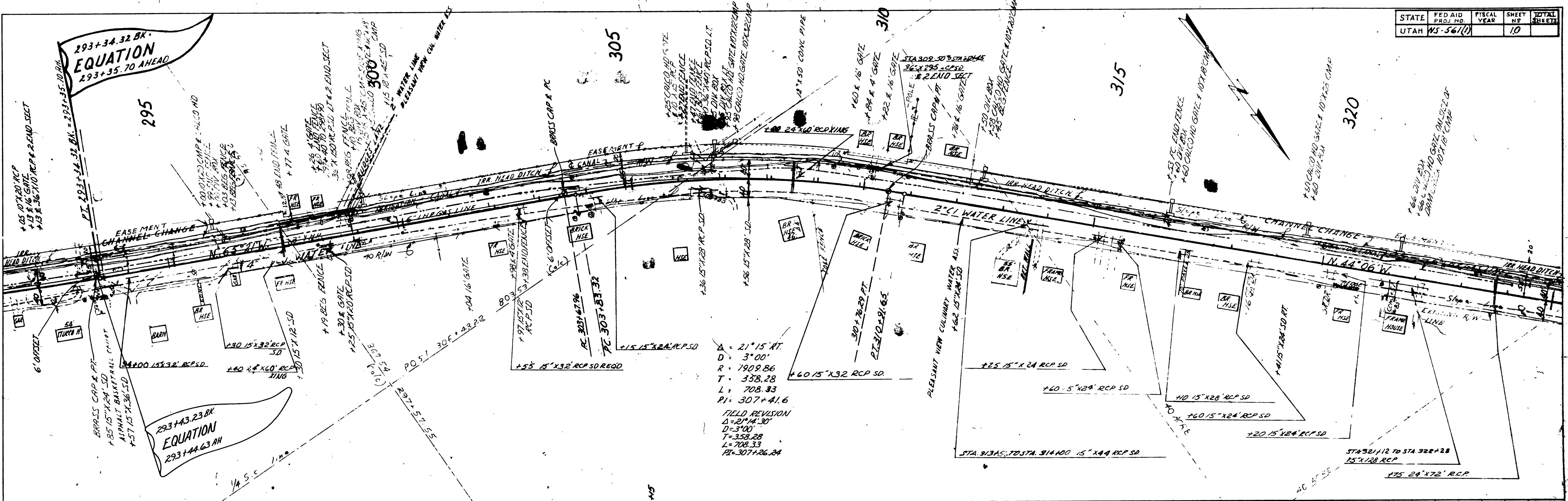
DATE	BY	PROFILE	REVISION
11/22/50	M. J. MARDEN	PL. 260	
11/22/50	M. J. MARDEN	PL. 260	
11/22/50	M. J. MARDEN	PL. 260	

Sta. 260+00 to Sta. 292+00 Power Poles to be moved to clear construction by the Owners.
 Sta. 260+00 to Sta. 292+00 Telephone Poles to be moved to clear construction by the Owners.

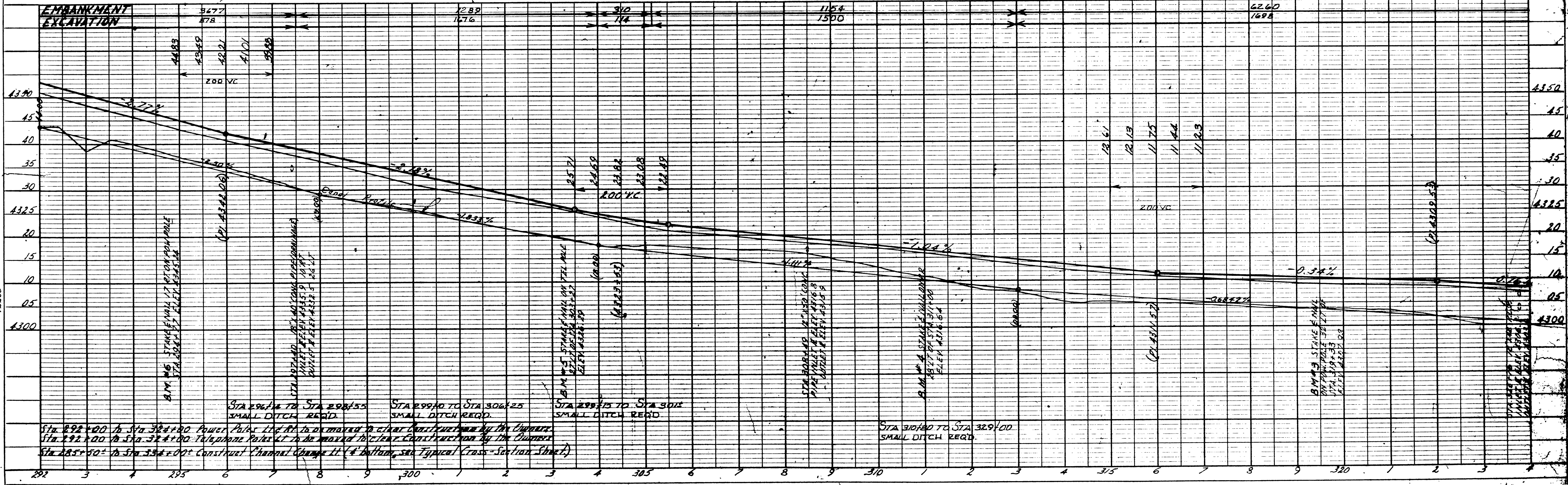
Sta. 285+50 to Sta. 334+00 Construct Channel Change at bottom. See typical cross section sheet.

DATE: 11/15/63
 BY: W.H. WATKINS
 CHECKED: J.P. HARRIS
 PLAN: 11/15/63
 NOTE BOOK: 11/15/63
 NO. 11/15/63
 STRUCTURE: 11/15/63

DATE: 11/15/63
 BY: W.H. WATKINS
 CHECKED: J.P. HARRIS
 PROFILE: 11/15/63
 NOTE BOOK: 11/15/63
 NO. 11/15/63
 STRUCTURE: 11/15/63



A = 21°15' RT
 D = 3°00'
 R = 7909.86
 T = 338.28
 L = 708.33
 PI = 307+41.6
 FIELD REVISION
 Δ = 21°14'30"
 D = 3°00'
 T = 358.28
 L = 708.33
 PI = 307+26.24

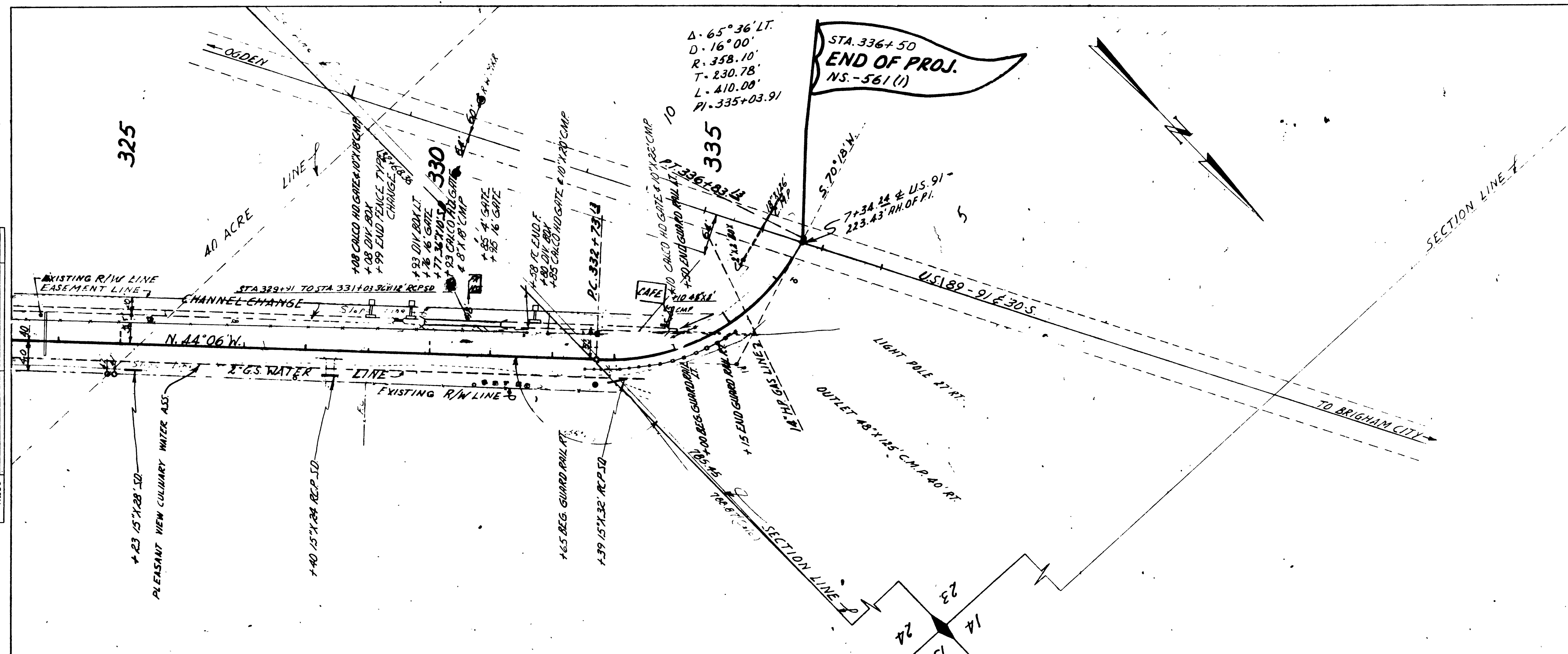


Sta 292+00 to Sta 324+00 Power Poles to be marked to clear right-of-way by the Engineer.
 Sta 292+00 to Sta 324+00 Telephone Poles to be marked to clear right-of-way by the Engineer.
 Sta 292+50 to Sta 324+00 Construct Channel Change at 4' bottom, see Typical Cross-Section Sheet.

STATE	FED AID PROJ. NO.	FISCAL YEAR	SHEET NO.	TOTAL SHEETS
UTAH	NS-561(1)		11	

DATE	BY	REVISION
7/22/59	W. H. MASSEY	1
7/22/59	W. H. MASSEY	2
7/22/59	W. H. MASSEY	3

PLAN
 SHEETED
 PLOTTED
 NOTE: ALL ALIGNMENT CHECKED BY FIELD SURVEY.
 NO. 22259



DATE	BY	REVISION
7/22/59	W. H. MASSEY	1
7/22/59	W. H. MASSEY	2
7/22/59	W. H. MASSEY	3

PROFILE
 SHEETED
 PLOTTED
 NOTE: ALL ALIGNMENT CHECKED BY FIELD SURVEY.
 NO. 22259
 STRUCTURE NOTATIONS OK'D.

